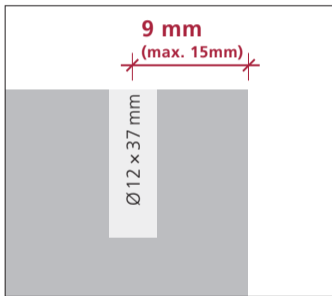




# Invis Mx2

## 1. Abstand / Distance



Kleiner Abstand für hohe Spannkraft  
Small distance for high clamping force

## 2. Parallel



MiniMag Mx2 Achse parallel zu Invis Mx2  
MiniMag Mx2 axis parallel with Invis Mx2

## 3. Drehzahl / Rotation speed



Drehzahl muss 1200 - 1500 min<sup>-1</sup> betragen  
Speed must be 1200 - 1500min<sup>-1</sup>

DE Bohren mit CNC,  
stationärer Maschine,  
oder Bohrlehre

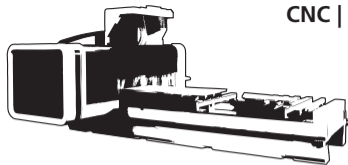
EN Drill with CNC,  
stationary machine  
or drill jig

FR Percer avec la machine  
CNC, machine station-  
naire, ou le gabarit de  
perçage

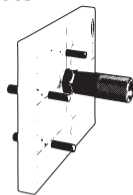
IT Forare con CNC,  
macchina stazionaria,  
o dima di foratura

ES Taladrado mediante  
CNC, multi-taladro  
ó plantilla Rasto

NL Boren met de CNC-  
machine, stationaire  
machine, of boormal

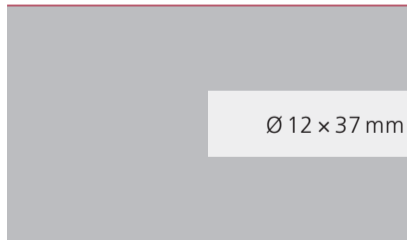


CNC | Rasto



Video

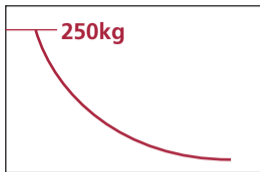
[www.lamello.com](http://www.lamello.com)



Ø 12 x 37 mm

9 mm (max. 15 mm)

9 mm

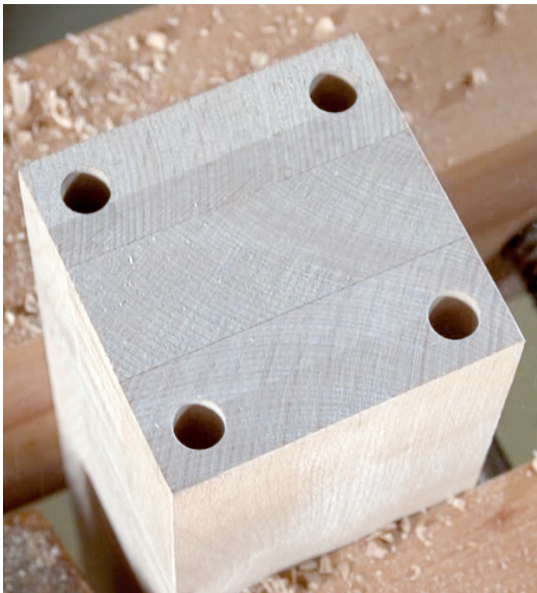


9 mm

15 mm



Ø 12 ×  
14 mm



DE Kleiner Abstand für hohe Spannkraft

EN Small distance for high clamping force

FR Distance plus petite pour une force de serrage plus grande

IT Piccolo spazio per alta tensione

ES Poca distancia para una mayor fuerza de sujeción

NL Kleinere afstand voor een hogere spankracht

DE Verbinder einschrauben.  
Für die Eindrehmutter  
Eindrehlehre benutzen.

EN Insert joining element.  
Use insertion jig for stud.

FR Visser les connecteurs.  
Utiliser le gabarit de  
montage pour les boulons.

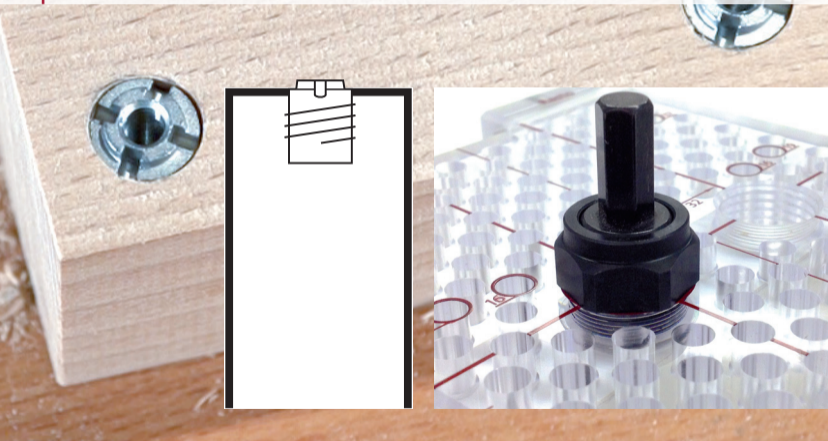
IT Avvitare la giunzione.  
Per le vite di serraggio  
usare la bussola di  
foratura.

ES Insertar el elemento  
de unión.

NL Verbinders inschroeven.  
Voor de bouten het  
montagemal gebruiken.



**DE Tipp:** Wenn die Bauteile ohne Spalt zusammenpassen, stimmen die Bohrungen  
**EN Tip:** If the workpieces fit together without gap then the holes were drilled correctly  
**FR Pointe:** Si les pièces s'accordent, sans cavité, les trous sont percés correctement  
**IT Consiglio:** Se i componenti si incastrano senza fessura, la foratura è giusta  
**ES Consejo:** Si los elementos encajan entre sí, sin holguras, los agujeros están bien hechos  
**NL Tip:** Als de werkstukken samen passen zonder holte, werden de gaten juist geboord



**DE** Führungskragen vorstehend = Eindrehbit bündig

**EN** Inner sleeve protruding = insertion bit flush

**FR** Bord de guidage dépasse la surface = bit de vissage plat

**IT** Bordo d'attacco supera la superficie = bit avvitatura conciso

**ES** = La rosca interior sobresale = La rosca exterior a ras con el tablero

**NL** Geleidingskraag uitstekend = inschoefbit gelijk

DE Schlagendes Geräusch  
= spannt  
Rollendes Geräusch  
= offen

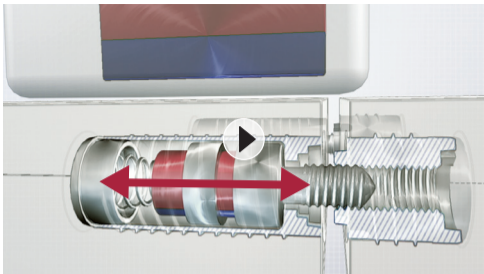
EN Hammering sound  
= clamping  
Rolling sound = open

FR Bruit cliquetis = fermé  
Bruit roulement = ouvert

IT rumore battendo = tende  
rumore rotabile = aperto

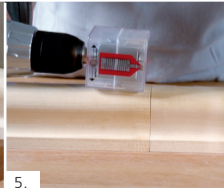
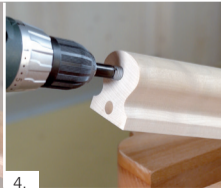
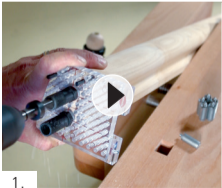
ES Con sonido de golpeteo,  
cierra  
Con sonido rodadura,  
abre

NL Kloppend geluid = dicht  
Rollend geluid = open





- DE** Akkuschauber mit Drehzahl 1200-1500min<sup>-1</sup> | Akku geladen? | Keine elektrische Bohrmaschine! | Schrauber-Achse parallel zu Invis Mx2-Achse! | Werkstücke nicht verkanten! | 5 Sekunden schliessen | Tipp beim wieder öffnen: Rotierender MiniMag Mx2 über die Flächen fahren um Verbindung zu finden
- EN** Cordless drill with 1200-1500 rpm | Battery charged? | Don't use electric drill! | Cordless drill axis parallel to Invis Mx2 axis! | No pressure on screw when joining! | Clamp for 5 seconds | Tip to open connection again: Move rotating MiniMag Mx2 over the surface to find the joint
- FR** Une viseuse avec une vitesse de rotation de 1200-1500 min<sup>-1</sup> | batterie chargée? | pas de perceuse électrique | Axe parallèle à l'axe de l'Invis Mx2 | ne pas incliner les pièces | fermer 5 secondes | Pointe: à la réouverture: glisser le Minimag Mx2 tournant sur les surfaces afin de trouver la liaison
- IT** La velocità dell'avvitatore deve essere di 1200-1500 giri/min | batteria carica? | nessun trapano elettrico | asse parallelo all'asse delle Mx2 Invis | pezzi avvitati non inclinare! | chiudere cinque secondi | consiglio per la riapertura: girando il MiniMag Mx2 sulla superficie per trovare la giunzione
- ES** Taladro a batería de 1.200 a 1.500 RPM | No usar taladros eléctricos | Poner en paralelo el taladro batería con el conector Invis Mx2 | No apretar el tornillo al juntarse | Cerrado en 5 segundos | Consejo para abrir el conector otra vez; Desplace el MiniMag Mx2 sobre la superficie del tablero hasta encontrar el conector
- NL** Accuschroevendraaier met toerental 1200-1500 min<sup>-1</sup> | accu geladen? | geen elektrische boormachine | Schroefas parallel met Invis Mx2-as | werkstukken niet kantelen | 5 seconden sluiten | Tip: bij het terug openen: de roterende Minimag Mx2 over de vlakken glijden om de verbinding te vinden







DE Spannt

EN Clamps

FR Serrage

IT Tende

ES Prensado

NL Spant





DE Unsichtbar

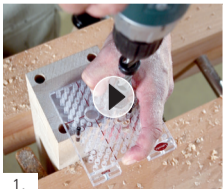
EN Invisible

FR Invisible

IT Invisibile

ES Invisible

NL Onzichtbaar



1.



2.



3.



4.



5.



DE Wiederlösbar

EN Detachable

FR Démontable

IT Smontabile

ES Desmontable

NL Demonteerbaar





6012317



6012309



6012208



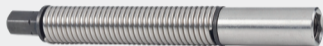
6012312



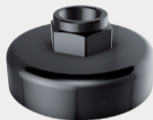
61123330



6112205



6100204



6112333



6112060



6100061



6112331



6160000



6100058



6560450



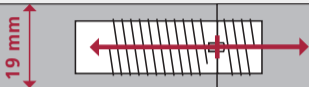
6160001



6160601

## Zugbruchfestigkeit

Tensile strength



## Verbinderset mit Eindrehmutter 14 mm

Joining element with  
stud 14 mm



Art.Nr. 6012300

## Verbinderset mit Eindrehmutter 30 mm

Joining element with  
stud 30 mm



Art.Nr. 6012301

Buche / beech  
Hêtre / beuk  
Faggio / Madera de haya

**2000 N**

**4000 N**

MDF

**1500 N**

**4000 N**

Fichte / Spruce  
Epicéa / Den  
Abete rosso / Madera de picea

**1000 N**

**2000 N**

Spanplatte / Chipboard  
Panneau de particules / Spaanderplaat  
Pannello di truciolato / Tablero aglomerado

**600 N**

**1600 N**